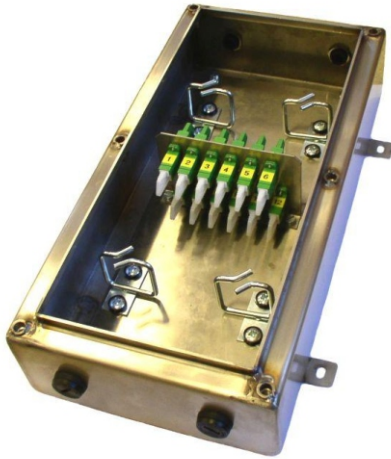




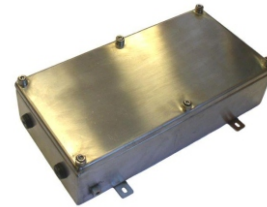
## Pre-connected Optical Cable POK-01 S Connecting Cabinet

 Certificate: ATEX



### Technical parameters:

Maximum number of fibres	12
Optical cable clamping	M16 x 1
Ambient temperature	0 to +40°C
Relative humidity	95% non-condensing
Protection	IP 54
Dimensions	360 x 180 x 96mm
Weight	2kg



The outer appearance of the connecting cabinet of the pre-connected optical cable

### Application:

The pre-connected optical cable POK-01 connecting cabinet is used for interconnecting individual sections of optical routes made of optical cables with pre-installed connectors. It is primarily intended for interconnecting optical routes to which optical devices meeting ČSN EN 60079-28, Article 5.1 are connected.

### Description:

The connecting cabinet is produced as a welded piece of stainless steel plate. In the middle of the cabinet there is a panel with optical connecting adapters fixed crossways. Pre-connected optical cables are brought in through the holes in the fronts of the connecting cabinet.

There are two inputs on the front and back side of the cabinet for bringing in pre-connected optical cables. The unused inputs are closed with end caps. Individual optical cable pigtailed ends with optical connectors are connected to interconnecting optical adapters.

The panel with optical adapters can be made in the design for pre-connected optical cables with pigtailed ends with E2000/APC, SC, ST connectors. Upon request, the cabinet can be adjusted for a pre-connected optical cable with a different splitter diameter. The standard cabinet is intended for optical cables with the maximum of 12 fibres as singlemode 9/125.



The pre-connected optical cable on a transport coil.

**The catalogue has only those selected important parameters for your final decision. For project designs always ask for the user's guide for this product and any engineering consultation about possible uses.**